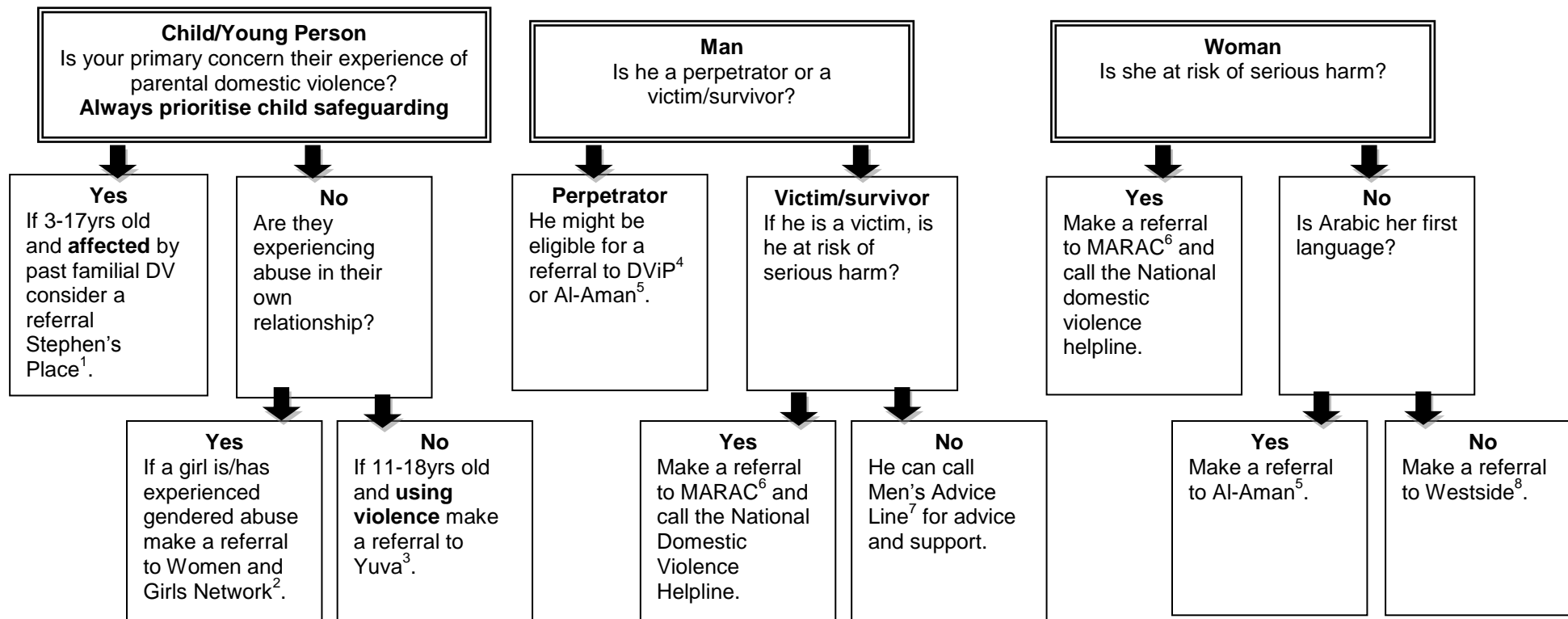


LBHF DV Services Flowchart – Children and Young People staff

Are you concerned about a **child/young person**, a **man** or a **woman**?



NATIONAL DOMESTIC VIOLENCE HELPLINE: 0808 2000 247

You must always follow your organisation's child protection policies. If you receive a disclosure from a woman with a child under the age of 12 months (including unborn children) you are legally obliged to refer to Children's Services. If you receive a referral from a woman with a child/dren older than this, referrals depend on professional judgement and making an assessment based on risk. LBHF Contact and Assessment team: 020 8753 5392 (Emergency no: 020 8748 8588)

Do not discuss a MARAC referral with a perpetrator.

[Type text]

Name of project	Contact	Who to refer	What happens
1. Stephen's Place*	020 8741 8020	3-17yrs old who have been affected by DV.	Therapy delivered by a team of psychologists for children who have been affected by domestic violence for up to six months.
2. Women and girls Network	0208 567 7347	Young women and girls who have experienced gendered violence.	Youth advocate can provide advice, guidance and support to young women and girls who have experienced gendered violence.
3. Yuva*	020 7928 2322 or shem@dvip.org	11-18yrs old using violence in close relationships.	Structured 1-2-1 direct interventions with young people to identify and challenge behaviours and adopt alternative ways of interacting.
4. DViP	020 7633 9181	Men over 18 perpetrating DV.	Runs Violence Prevention Project (VPP) for adult male perpetrators of domestic violence. * Yuva, Stephen's Place and Al-Aman are all run by DViP but are separate projects.
5. Al-Aman*	020 87482577 - Men	Arabic speaking male perpetrators.	Provides a Violence Prevention Programme for abusive men. Staff speak English and Arabic.
	020 8563 2250 - Women	Arabic speaking women.	Provides a woman's support service for women. Staff speak English and Arabic.
6. MARAC	Your MARAC representative or Standing Together (0208 748 5717)	Men & women at risk of serious harm or death.	MARAC is a meeting where information is shared on the highest risk domestic abuse cases between representatives of statutory and voluntary sector agencies. Male victim/survivors are supported by Victim Support and female victim/survivors by ADVANCE.
7. Men's Advice Line	0808 801 0327	Men experiencing domestic violence.	Provides confidential advice to any man experiencing domestic violence (in a heterosexual or same sex relationship).
8. Westside	020 8996 8810	Women over the age of 16 experiencing DV.	Direct support offered to up to 40 women experiencing domestic violence. Run a weekly DV Advice and Information Surgery as well as short advice sessions by phone.
Other support agencies			
ADVANCE	NA	High risk women.	Provides crisis intervention, independent advocacy and support to women experiencing high risk DV. They do not accept direct referrals from CYPS. They support any woman referred to MARAC. ADVANCE accepts direct referrals from the CSU, health professionals and self-referrals.
Rape Crisis Centre	020 8567 7347	Women 14yrs+ who have experienced sexual violence, either recent or historic.	Provide therapeutic support, guidance and advocacy to women who have experienced sexual violence at some point (either historical or recent).
Minerva	0208 563 2225	Women at risk of offending	Provides community based support to women who have support needs because they have offended, are offending or are at risk of offending.
<p>Standing Together Against Domestic Violence coordinates the response to domestic violence in the borough of Hammersmith and Fulham. If you need information on policies, training, MARAC or referral pathways contact us for advice and guidance. We do not take client referrals.</p> <p>Tel: 0208 748 5717</p>			