

STANDING together

against domestic violence

*Communication Pathways
between
Hammersmith & Fulham and
Kensington & Chelsea Police Witness Care
Units
and
Agencies Working with Victims/Witnesses
at the
Specialist Domestic Violence Court,
West London Magistrates Court*

Last updated: July 2006

© Standing Together 2006

Please credit Standing Together if you use any of this material

Registered office:

Room 44D
The Polish Centre
238-246 King Street
London W6 0RF

Telephone: 020 8748 5717

Fax: 020 8748 5921

E-mail: admin@standingtogether.org.uk

Web Site: www.standingtogether.org.uk

Registered charity number: 1088844

Registered company number: 4283131

CHART A

**WITNESS CARE UNIT HAMMERSMITH & FULHAM AND
KENSINGTON & CHELSEA POLICE
STANDARD CASE ALLOCATION**

CPS DUTY PROSECUTOR
OR
CPS DIRECT

CHARGE

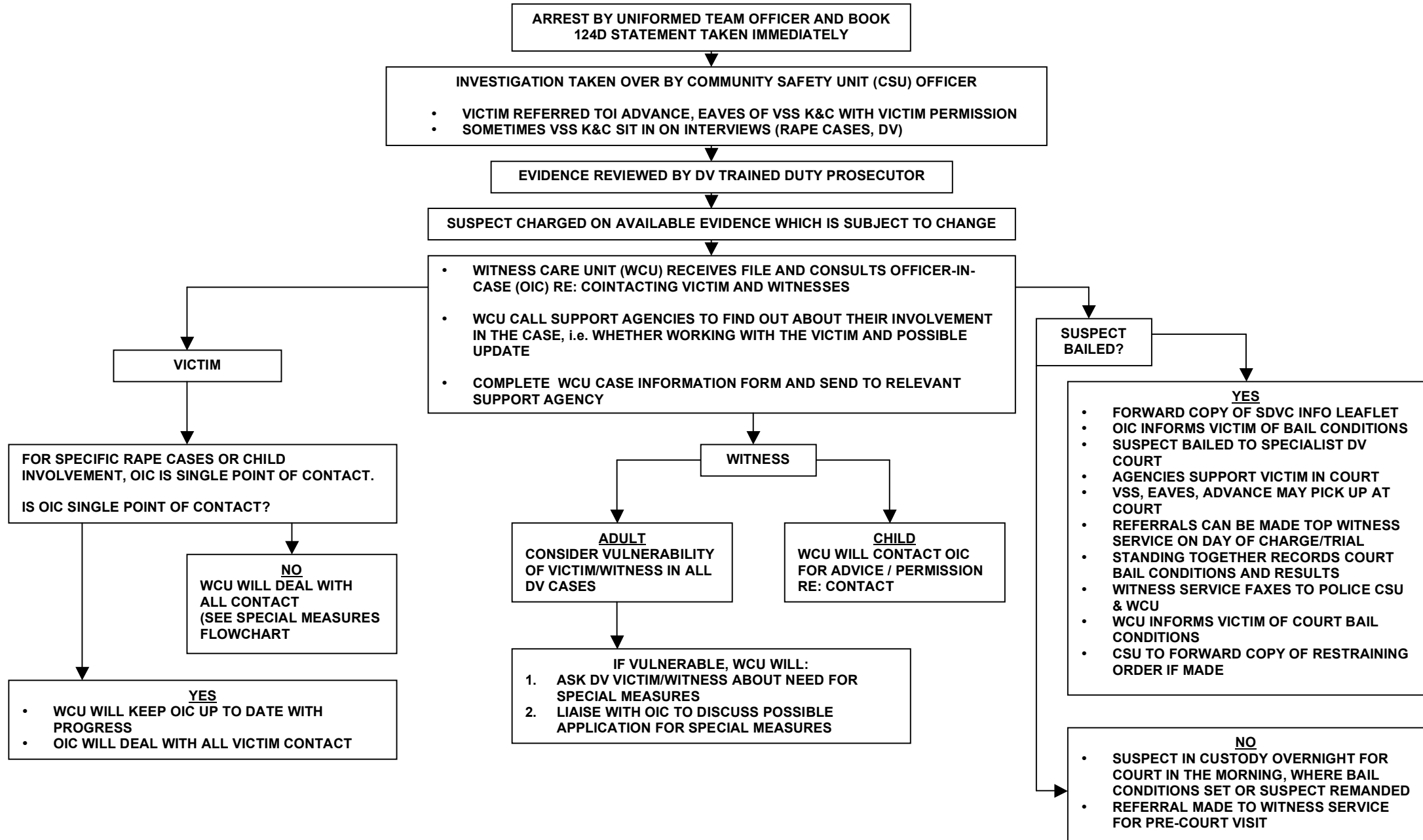
WITNESS CARE UNIT
MANAGER

WCU HANDLES EVERY CASE THAT COMES THROUGH THE CJU:

- ABH
- GBH
- RAPE
- ROBBERY
- FIREARMS
- COMMON ASSAULT
- INDECENT ASSAULT
- HARASSMENT
- BURGLARY
- CRIMINAL DAMAGE
- PUBLIC ORDER OFFENCE

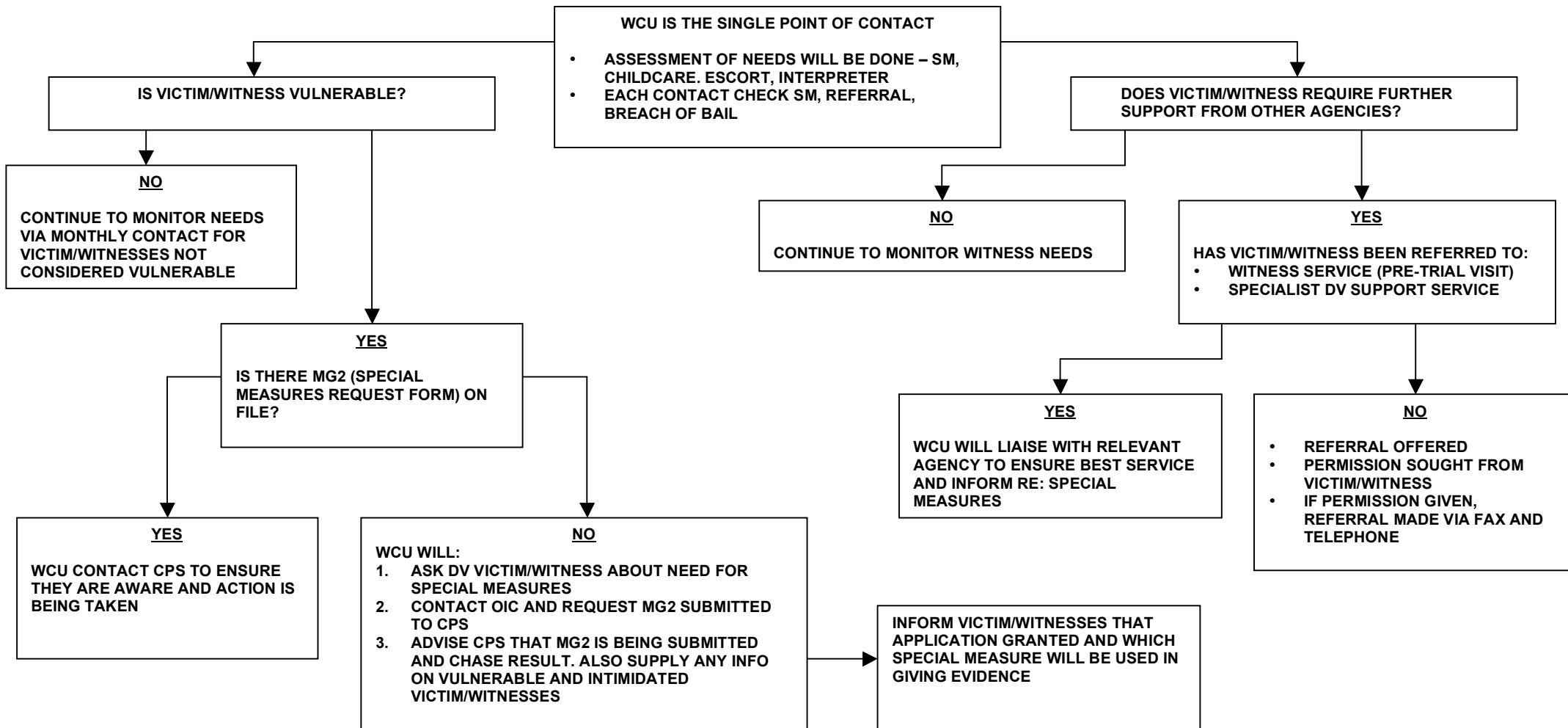
Note: The Witness Care Unit is the single point of contact for any queries regarding witnesses. The WCU will liaise with the Police CJU if they are still dealing with the case.

DOMESTIC VIOLENCE CASE



NOTE: When WCU gets allocated cases they call the Support Agencies and clearly state the purpose of calling the agencies. Advocates will seek victim's permission prior to sharing information

SPECIAL MEASURES AND OTHER SUPPORT FOR VICTIM/WITNESSES



NOTE: WHERE A REQUEST FOR SMD OR OTHER SUPPORT IS MADE BY VICTIM/WITNESS TO ONE OF THE DVWSG AGENCIESX IN H&F OR K&C:

- CALL THE WCU
- SPEAK TO THE WCU CLERK OR THE CSU OFFICER IN THE CASE
- EXAMPLES OF SUPPORT REQUESTED COULD BE FOR INTERPRETERS, CHILD CARE ARRANGEMENTS, TRAVEL SUPPORT, ETC.
- ADD INFORMATION INTO DV CASE INFO FORM AND FORWARD TO WCU

GLOSSARY

ADVANCE	ADVANCE Advocacy Project
CJU	Criminal Justice Unit
CPS	Crown Prosecution Service
CSU	Community Safety Unit
Eaves	Eaves Women's Aid
H&F	Hammersmith & Fulham
K&C	Kensington & Chelsea
MG2	Special Measures Request Form
OIC	Officer-In-Case
ST	Standing Together Against Domestic Violence
SMD	Special Measures Directions
V/W	Victim/Witness
VSS K&C	Victim Support Service, Kensington & Chelsea
WCU	Witness Care Unit
WS	Witness Service – West London Magistrates Court