



**'A YEAR IN THE LIFE' OF THE
WESTMINSTER VIOLENCE AGAINST
WOMEN AND GIRLS (VAWG) HOUSING
FIRST PROJECT**
THE ARTWORK EXHIBITION

City of Westminster
**STANDING
TOGETHER**
against domestic abuse

solace

INTRODUCTION

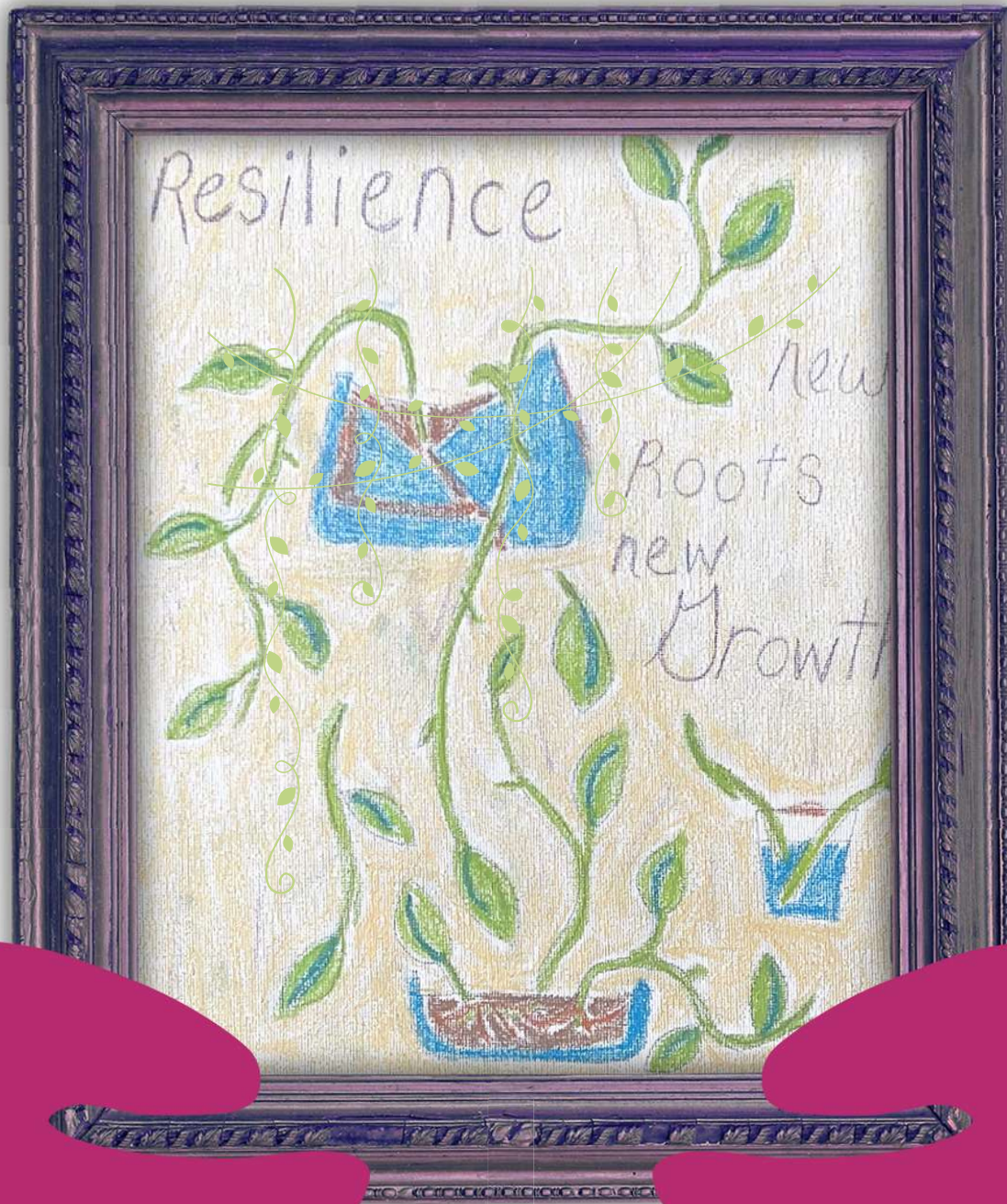


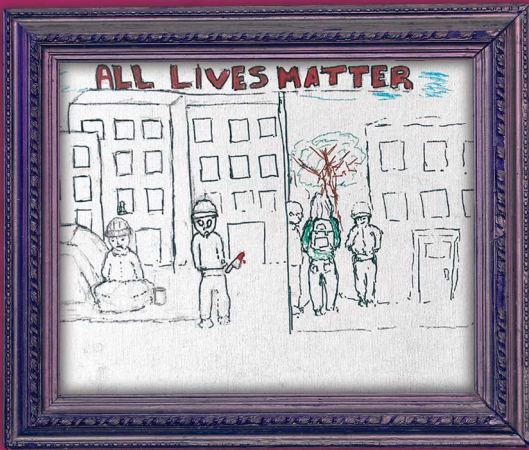
This document showcases the artwork displayed at the 'A year in the life of the Westminster VAWG Housing First Project', which was held in March 2024 as part of our evaluation of the fourth year of the project. This year, we focused on creative data outcomes to highlight the successes and challenges of the project, and brought together women with lived experience, frontline professionals, funders and cross sector colleagues for an afternoon to celebrate the project, and highlight the importance of having a dedicated Housing First provision for women. The artwork was created by women supported by the project, and colleagues who work across the partnership. The event was co-produced with the women supported by the project, and supported by [Arts & Homelessness International](#) – who were commissioned by Standing Together to support with the creative data evaluation.

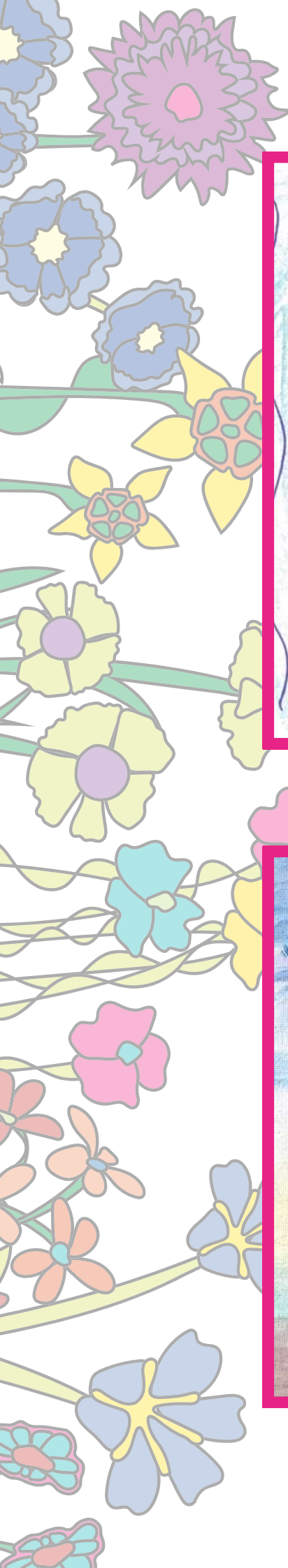
[Click here for more information about the evaluation report](#)

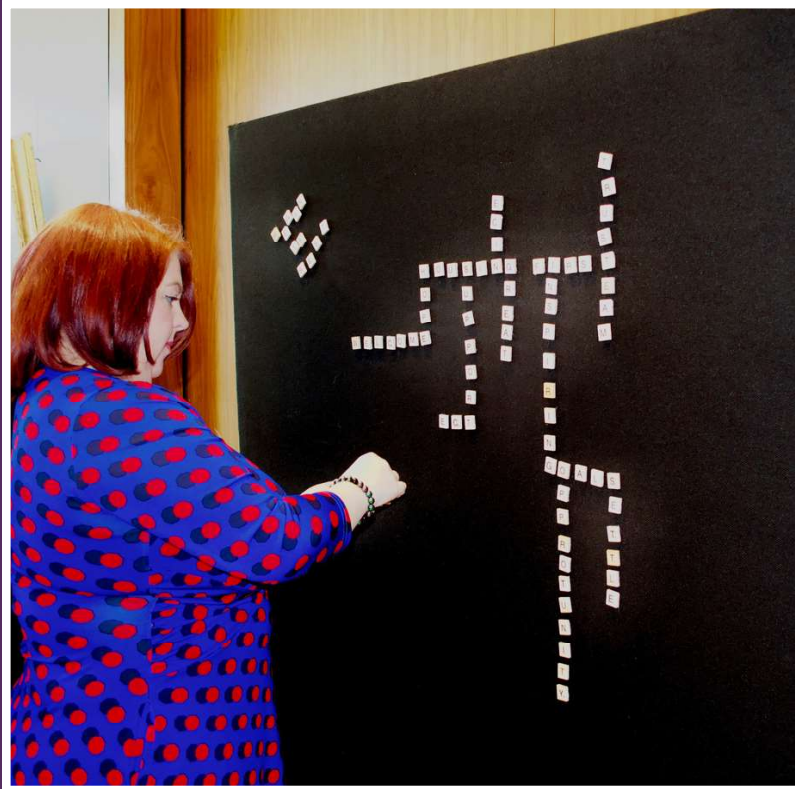


THE ARTWORK & EVENT









P A U L A
B A R K E R

Co-chair of the APPG for
Ending Homelessness

N I C O L E
J A C O B S

Domestic Abuse Commissioner





Sanctuary



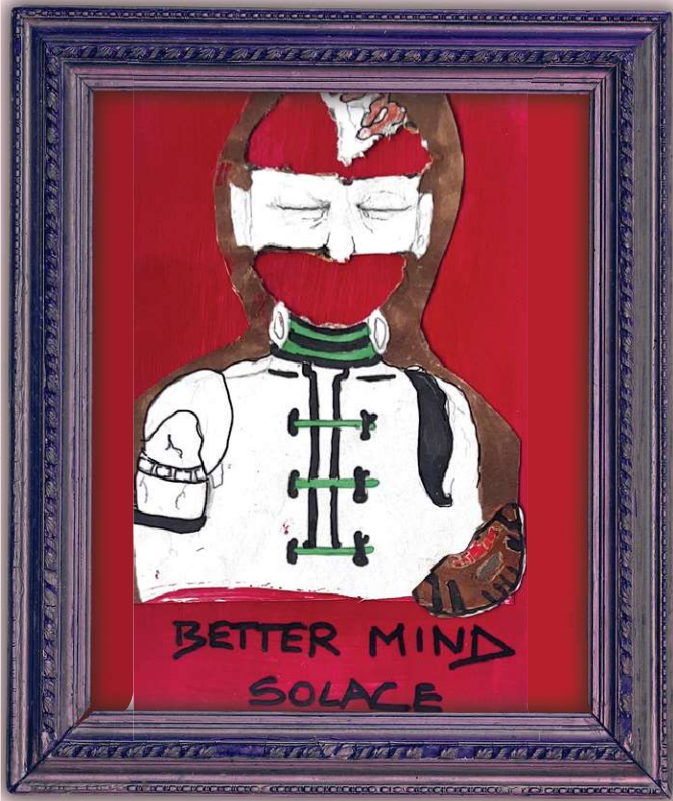


100%

Tenancy sustainment for the year was 100%.



All of the women's artwork was displayed in Westminster City Hall.



"I had a place with [a supported accommodation provider] but rathered sleeping in a tent (as thats what I'm used being homeless most my life). Then I met Solace and the got me a flat!! Never would I have thought being chucked out at 14 I'd have a beautiful flat in Marylebone!!! That is thanks to SOLACE!!"







This interactive art piece was co-produced with Art & Homelessness International, and the women supported by the Westminster VAWG Housing First Project. The game highlighted the successes/positives of the projects as the 'ladders', and the barriers and systemic challenges as 'snakes'. The game also showed that various intersecting identities and barriers mean not every person has equal access to services - which is crucial when thinking of how best to support women experiencing multiple disadvantage.





“Like *life*



and *death*”

ACKNOWLEDGEMENTS



First and foremost, a big thank you to all of the women who shared their experiences with us and gave us feedback for this evaluation. Thank you also to the fantastic Solace team for supporting the women to engage in this year's evaluation process, and for your feedback into this year's evaluation. Thank you to our housing partners for their commitment to the project, and for your feedback. Thank you to Hannah Brown, Housing First Coordinator at Standing Together for facilitating the insightful focus groups for this year's evaluation. Finally, we would like to thank Arts & Homelessness International for supporting with this year's evaluation – you took our seed of an idea for this piece of work, and created something truly inspiring and impactful.

Standing Together

PO Box 74648, London, W6 6LA

www.standingtogether.org.uk

Solace Women's Aid

PO Box 80992, London, NW1W 6GW

www.solacewomensaid.org

Standing Together is a registered charity in England and Wales (1088844) and is a company by limited guarantee in England and Wales (4283131)